

AVENIR - POD 16

BEING A REPLAT OF A PORTION OF PARCEL A-1, AVENIR, AS RECORDED IN PLAT BOOK 127 PAGE 85, TOGETHER WITH A PORTION OF TRACT RBE 6, AVENIR - POD 15, AS RECORDED IN PLAT BOOK 134 PAGE 179, TOGETHER WITH A PORTION OF TRACT RBE 4, AVENIR - SPINE ROAD 6, AS RECORDED IN PLAT BOOK 135 PAGE 189, ALL OF THE PUBLIC RECORDS OF PALM BEACH COUNTY, FLORIDA LYING IN SECTIONS 8 AND 9, TOWNSHIP 42 SOUTH, RANGE 41 EAST, CITY OF PALM BEACH GARDENS, PALM BEACH COUNTY, FLORIDA.

THIS INSTRUMENT PREPARED BY
RONNIE L. FURNISS
OF
CAULFIELD and WHEELER, INC.
SURVEYORS - ENGINEERS - PLANNERS
7900 GLADES ROAD, SUITE 100
BOCA RATON, FLORIDA 33434 - (561)392-1991
CERTIFICATE OF AUTHORIZATION NO. LB3591
SEPTEMBER 2023

173

STATE OF FLORIDA
COUNTY OF PALM BEACH
THIS PLAT WAS FILED FOR
RECORD AT _____ M.
THIS _____ DAY OF _____
A.D. 2023 AND DULY RECORDED
IN PLAT BOOK _____ ON
PAGES _____ THROUGH _____

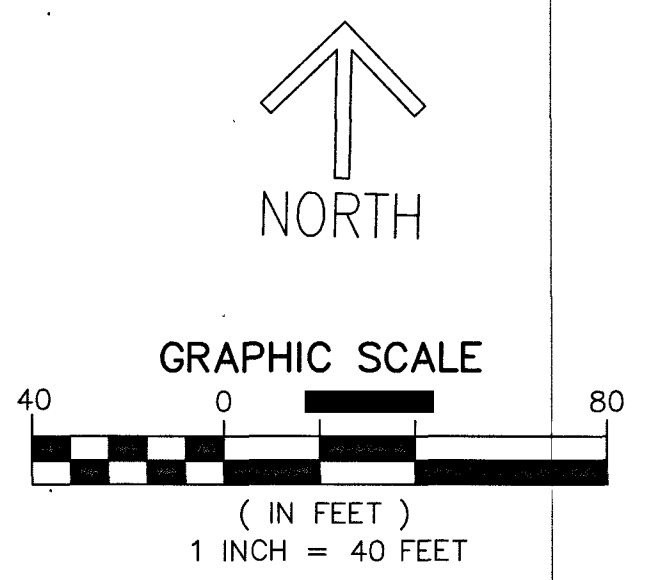
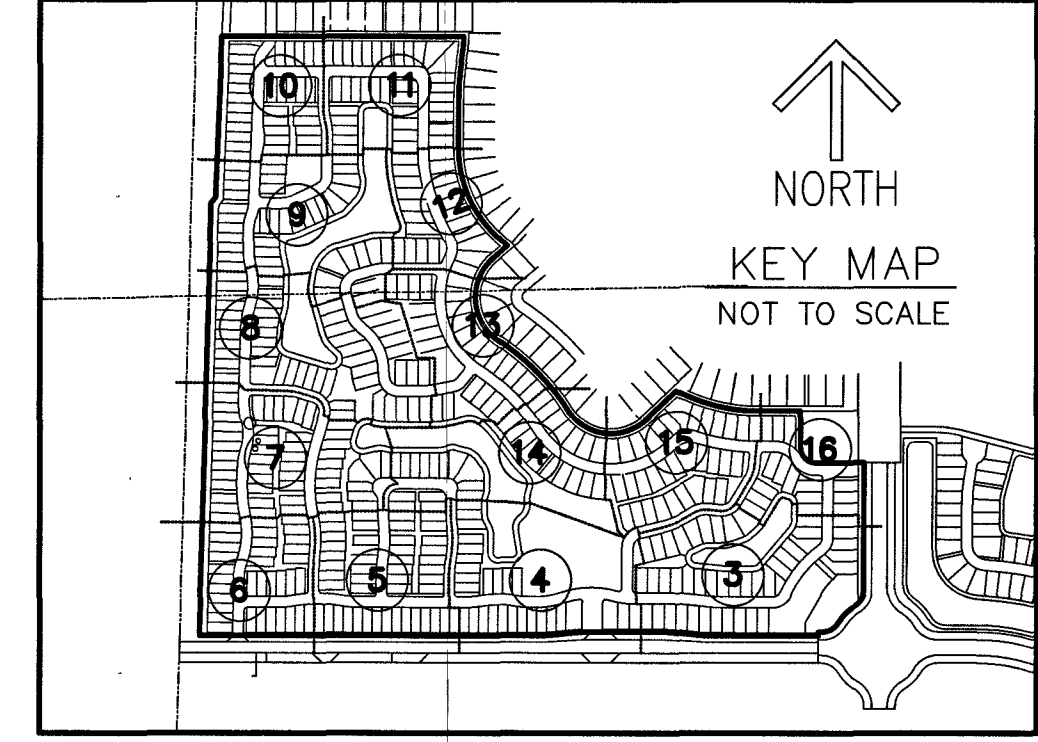
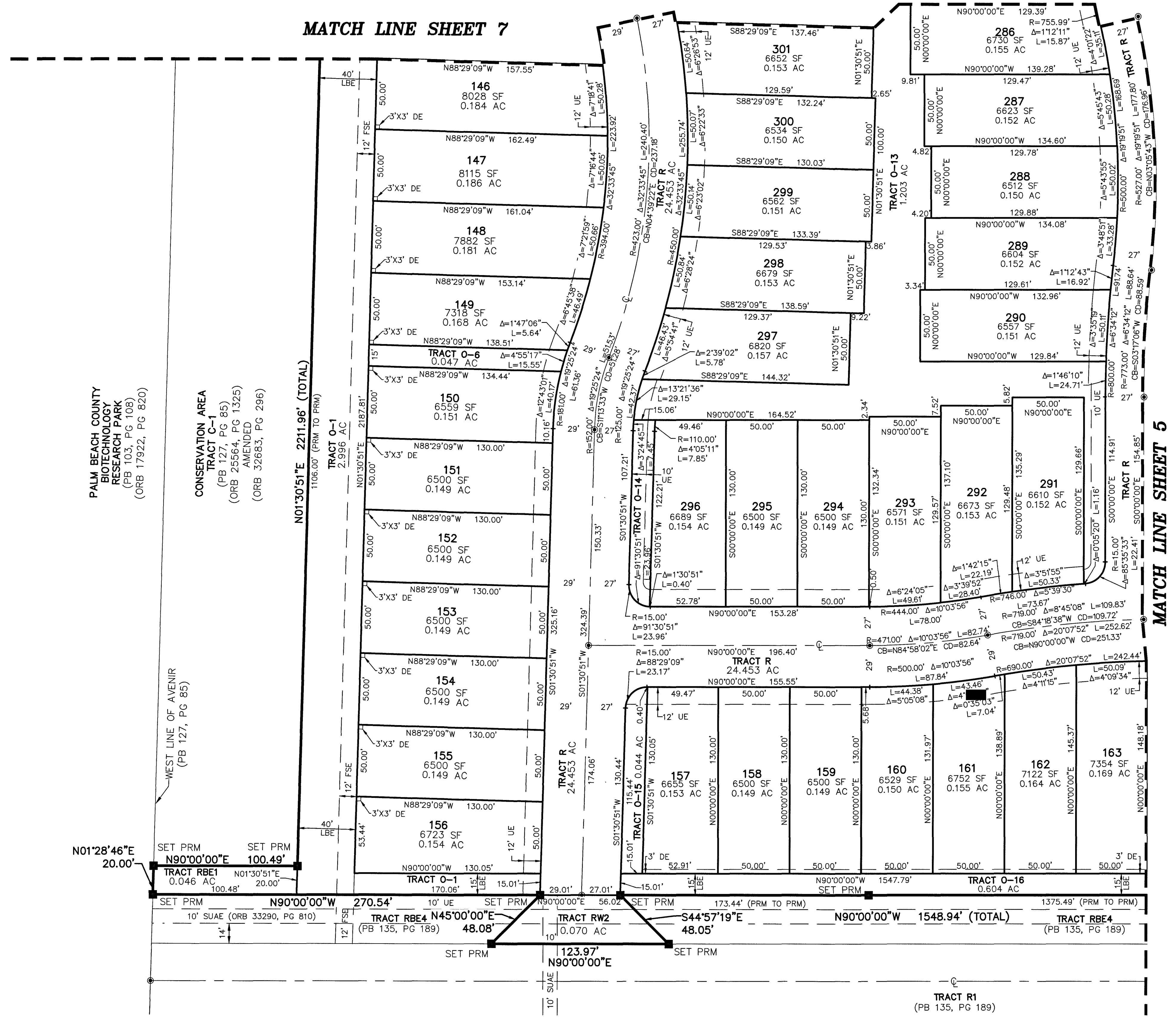
JOSEPH ABRUZZO
CLERK OF THE CIRCUIT COURT
AND COMPTROLLER

BY: _____
DEPUTY CLERK

SHEET 6 OF 16

MATCH LINE SHEET 7

MATCH LINE SHEET 5



- LEGEND / ABBREVIATIONS**
- CL - CENTERLINE
 - Δ - DELTA (CENTRAL ANGLE)
 - AC - ACRES
 - CB - CHORD BEARING
 - CD - CHORD DISTANCE
 - DE - DRAINAGE EASEMENT
 - EAP - EMERGENCY ACCESS EASEMENT
 - FSA - FIRE SAFETY ACCESS EASEMENT
 - IEE/UE - INGRESS EGRESS UTILITY EASEMENT
 - L - ARC LENGTH
 - LAE - LIMITED ACCESS EASEMENT
 - LB - LICENSED BUSINESS
 - LBE - LANDSCAPE BUFFER EASEMENT
 - LSE - LIFT STATION EASEMENT
 - O.R.B. - OFFICIAL RECORD BOOK
 - PB - PLAT BOOK
 - PG - PAGE
 - P.P.A.E. - PERPETUAL PUBLIC ACCESS EASEMENT
 - R - RADIUS
 - (R) - INDICATES RADIAL LINE
 - RB - INDICATES RADIAL BEARING
 - RBE - ROADWAY BUFFER EASEMENT
 - SF - SQUARE FEET
 - SUA - SEACOAST UTILITY AUTHORITY EASEMENT
 - UE - UTILITY EASEMENT
 - PRM - DENOTES PERMANENT REFERENCE MONUMENT
 - 5/8" IRON ROD WITH CAP STAMPED
 - C&W PRM LB 3591
 - CP - DENOTES PERMANENT CONTROL POINT
 - SC - 1/4 SECTION CORNER
 - SC - SECTION CORNER

PALM BEACH COUNTY
BIOTECHNOLOGY
RESEARCH PARK
(PB 103, PG 108)
(ORB 17922, PG 820)

CONSERVATION AREA
TRACT C-1
(PB 127, PG 85)
(ORB 25564, PG 1325)
AMENDED
(ORB 32683, PG 296)

WEST LINE OF AVENIR
(PB 127, PG 85)

SET PRM
N90°00'00"E
100.49'

SET PRM
N01°30'51"E
20.00'

SET PRM
N01°30'51"E
20.00'

SET PRM
N90°00'00"E
100.48'

SET PRM
N01°30'51"E
20.00'

SET PRM
N01°30'51"E
20.00'

SET PRM
N90°00'00"E
100.48'

SET PRM
N01°30'51"E
20.00'

SET PRM
N01°30'51"E
20.00'

SET PRM
N90°00'00"E
100.48'

SET PRM
N01°30'51"E
20.00'

SET PRM
N01°30'51"E
20.00'

SET PRM
N90°00'00"E
100.48'

SET PRM
N01°30'51"E
20.00'

SET PRM
N01°30'51"E
20.00'

SET PRM
N90°00'00"E
100.48'

SET PRM
N01°30'51"E
20.00'

SET PRM
N01°30'51"E
20.00'

TRACT RBE1
0.046 AC

TRACT O-1
0.070 AC

TRACT O-15
0.044 AC

TRACT R
24.453 AC

TRACT O-16
0.604 AC

TRACT RBE4
0.169 AC

TRACT RBE2
0.070 AC

TRACT RBE4
0.169 AC

TRACT RBE4
0.169 AC

TRACT RBE4
0.169 AC

TRACT RBE4
N45°00'00"E
48.08'

TRACT RBE2
N45°00'00"E
48.08'

TRACT RBE2
N45°00'00"E
48.08'

TRACT RBE2
N45°00'00"E
48.08'

TRACT RBE2
N45°00'00"E
48.08'

TRACT RBE2
N45°00'00"E
48.08'

TRACT RBE2
N45°00'00"E
48.08'

TRACT RBE2
N45°00'00"E
48.08'

TRACT RBE2
N45°00'00"E
48.08'

TRACT RBE2
N45°00'00"E
48.08'

TRACT RBE1
N45°00'00"E
48.08'

TRACT RBE1
N45°00'00"E
48.08'

TRACT RBE1
N45°00'00"E
48.08'

TRACT RBE1
N45°00'00"E
48.08'

TRACT RBE1
N45°00'00"E
48.08'

TRACT RBE1
N45°00'00"E
48.08'

TRACT RBE1
N45°00'00"E
48.08'

TRACT RBE1
N45°00'00"E
48.08'

TRACT RBE1
N45°00'00"E
48.08'

TRACT RBE1
N45°00'00"E
48.08'

TRACT RBE1
N45°00'00"E
48.08'

TRACT RBE1
N45°00'00"E
48.08'

TRACT RBE1
N45°00'00"E
48.08'

TRACT RBE1
N45°00'00"E
48.08'

TRACT RBE1
N45°00'00"E
48.08'

TRACT RBE1
N45°00'00"E
48.08'

TRACT RBE1
N45°00'00"E
48.08'

TRACT RBE1
N45°00'00"E
48.08'

TRACT RBE1
N45°00'00"E
48.08'

TRACT RBE1
N45°00'00"E
48.08'

TRACT RBE1
N45°00'00"E
48.08'

TRACT RBE1
N45°00'00"E
48.08'

TRACT RBE1
N45°00'00"E
48.08'

TRACT RBE1
N45°00'00"E
48.08'

TRACT RBE1
N45°00'00"E
48.08'

TRACT RBE1
N45°00'00"E
48.08'

TRACT RBE1
N45°00'00"E
48.08'

TRACT RBE1
N45°00'00"E
48.08'

TRACT RBE1
N45°00'00"E
48.08'

TRACT RBE1
N45°00'00"E
48.08'

TRACT RBE1
N45°00'00"E
48.08'

TRACT RBE1
N45°00'00"E
48.08'

TRACT RBE1
N45°00'00"E
48.08'

TRACT RBE1
N45°00'00"E
48.08'

TRACT RBE1
N45°00'00"E
48.08'

TRACT RBE1
N45°00'00"E
48.08'

TRACT RBE1
N45°00'00"E
48.08'

TRACT RBE1
N45°00'00"E
48.08'

TRACT RBE1
N45°00'00"E
48.08'

TRACT RBE1
N45°00'00"E
48.08'

TRACT RBE1
N45°00'00"E
48.08'

TRACT RBE1
N45°00'00"E
48.08'

TRACT RBE1
N45°00'00"E
48.08'

TRACT RBE1
N45°00'00"E
48.08'

TRACT RBE1
N45°00'00"E
48.08'

TRACT RBE1
N45°00'00"E
48.08'

TRACT RBE1
N45°00'00"E
48.08'

TRACT RBE1
N45°00'00"E
48.08'

TRACT RBE1
N45°00'00"E
48.08'

TRACT RBE1
N45°00'00"E
48.08'

TRACT RBE1
N45°00'00"E
48.08'

TRACT RBE1
N45°00'00"E
48.08'

TRACT RBE1
N45°00'00"E
48.08'

TRACT RBE1
N45°00'00"E
48.08'

TRACT RBE1
N45°00'00"E
48.08'

TRACT RBE1
N45°00'00"E
48.08'

TRACT RBE1
N45°00'00"E
48.08'

TRACT RBE1
N45°00'00"E
48.08'

TRACT RBE1
N45°00'00"E
48.08'

TRACT RBE1
N45°00'00"E
48.08'

TRACT RBE1
N45°00'00"E
48.08'

TRACT RBE1
N45°00'00"E
48.08'

TRACT RBE1
N45°00'00"E
48.08'

TRACT RBE1
N45°00'00"E
48.08'

TRACT RBE1
N45°00'00"E
48.08'

TRACT RBE1
N45°00'00"E
48.08'

TRACT RBE1
N45°00'00"E
48.08'

TRACT RBE1
N45°00'00"E
48.08'

TRACT RBE1
N45°00'00"E
48.08'

TRACT RBE1
N45°00'00"E
48.08'